

ARCOA 39 MYSTIC



DATI TECNICI

Lunghezza	11,40 Mt	Larghezza	3,75 Mt
Pescaggio	1,2 Mt	Dislocamento	8000 Kg
Anno costr.	2006	Anno immatricolazione	2006
Velocità massima	28 Mn	Velocità crociera	16 Mn
Bandiera	Italian	Note Finanziarie	Vat included
Condizione	Brokerage		

PREZZO

euro 139.500

+5% commissione

"Dati ritenuti corretti, ma non contrattuali. La presente non costituisce, in nessun caso, documento contrattuale."

ARCOA 39 MYSTIC

DESCRIZIONE

Beautiful Lobster made by a historic French shipyard. In fact, the boat is well structured and the well-designed internal layout offers a large cockpit with 2 distinct areas, one in the shade under the hard-top and the other exposed to the sun with a corner sofa that can be used as a sunbathing area, if necessary turns into an additional living room. The boat is in good condition, it needs small maintenance interventions of normal extraordinary maintenance.

COMBUSTIBILI E MOTORI

Nr Serbatoi	1	Mat. Serbatoi	stainless steel
Cap. Serbatoi	Diesel Lt	Carburante	diesel
Nr Motori	2	Marca motori	yanmar
Modello motori	6lpa stp	Potenza motori	310 CV
Ore moto	850	Trasmissione	v drive

MATERIALE COSTRUZIONE

Scafo	fiberglass
Tuga	fiberglass teak
Coperta	fiberglass

IDRAULICI

Nr Serbatoi acqua	1	Capacità di ognuno	250 Lt
Materiale	polietilene	Autoclave	yes
Dissalatore	no	Boiler	yes

ELETTRICI

Tensione	12/220v	Carica batterie	yes
Numero Batterie	7	Cap. Batterie	650 Ah
Generatore	yes	Marca	dinamica 3,5 Kw
Inverter	no		

DESCRIZIONE INTERNI

- Forward stateroom with double bed and direct access to the bathroom;

ARCOA 39 MYSTIC

- Guest cabin on starboard side with 2 flat beds convertible into a large double bed;
- Bright kitchenette with corten hob, ceramic glass burners, sink and fridge;
- Bathroom with shower and electric toilet (double entrance).

DESCRIZIONE ARMAMENTI

Electric hard top	Wet bar with sink	N. 2 Fridge
N. 2 burner glass ceramic stove	Aft bimini top	Camper covers
Air conditioning	Generator	Cockpit in teak
Full Teak deckhouse	Elongated teak swim platform	Hydraulic gangway
TV system		

DESCRIZIONE STRUMENTAZIONE

Compass	Plotter/Echo	Radar
Autopilot	Autopilot remote control	VHF
Bow thruster	Electronic throttles	Flaps
Hi-Fi		

NOTE AGGIUNTIVE

Replaced right turbo compressor 2020; Right gearbox replaced 2020; Outdoor gas stove 2020;
Wooden cockpit table 2021; Camper covers 2022; Aft bimini top 2022;

ARCOA 39 MYSTIC



ARCOA 39 MYSTIC



ARCOA 39 MYSTIC



ARCOA 39 MYSTIC



ARCOA 39 MYSTIC



ARCOA 39 MYSTIC



ARCOA 39 MYSTIC



ARCOA 39 MYSTIC



ARCOA 39 MYSTIC



ARCOA 39 MYSTIC



ARCOA 39 MYSTIC



ARCOA 39 MYSTIC

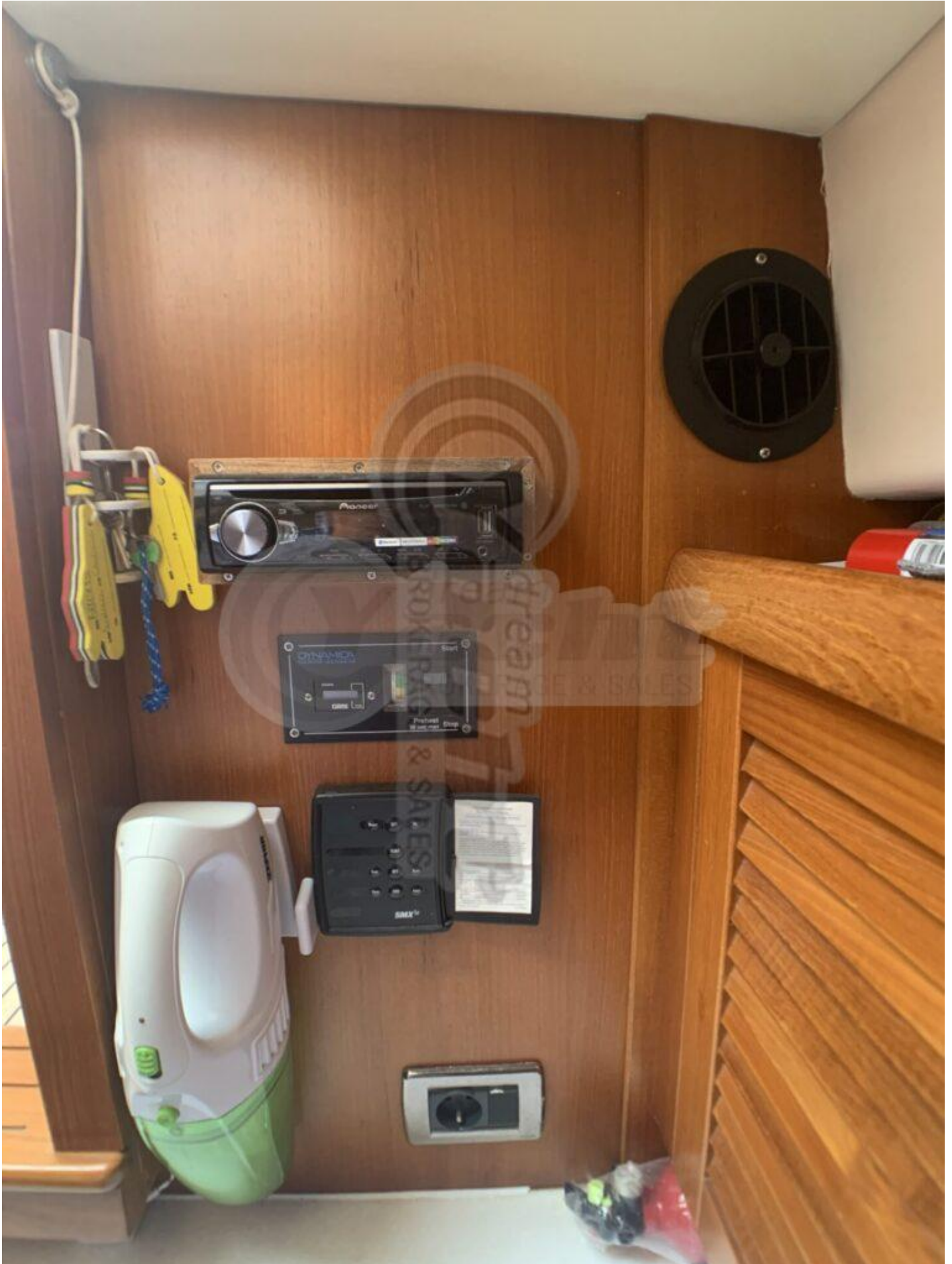


ARCOA 39 MYSTIC





ARCOA 39 MYSTIC



ARCOA 39 MYSTIC



ARCOA 39 MYSTIC



ARCOA 39 MYSTIC



ARCOA 39 MYSTIC



ARCOA 39 MYSTIC



ARCOA 39 MYSTIC



ARCOA 39 MYSTIC



ARCOA 39 MYSTIC



ARCOA 39 MYSTIC



ARCOA 39 MYSTIC



ARCOA 39 MYSTIC



ARCOA 39 MYSTIC



ARCOA 39 MYSTIC



ARCOA 39 MYSTIC



ARCOA 39 MYSTIC

